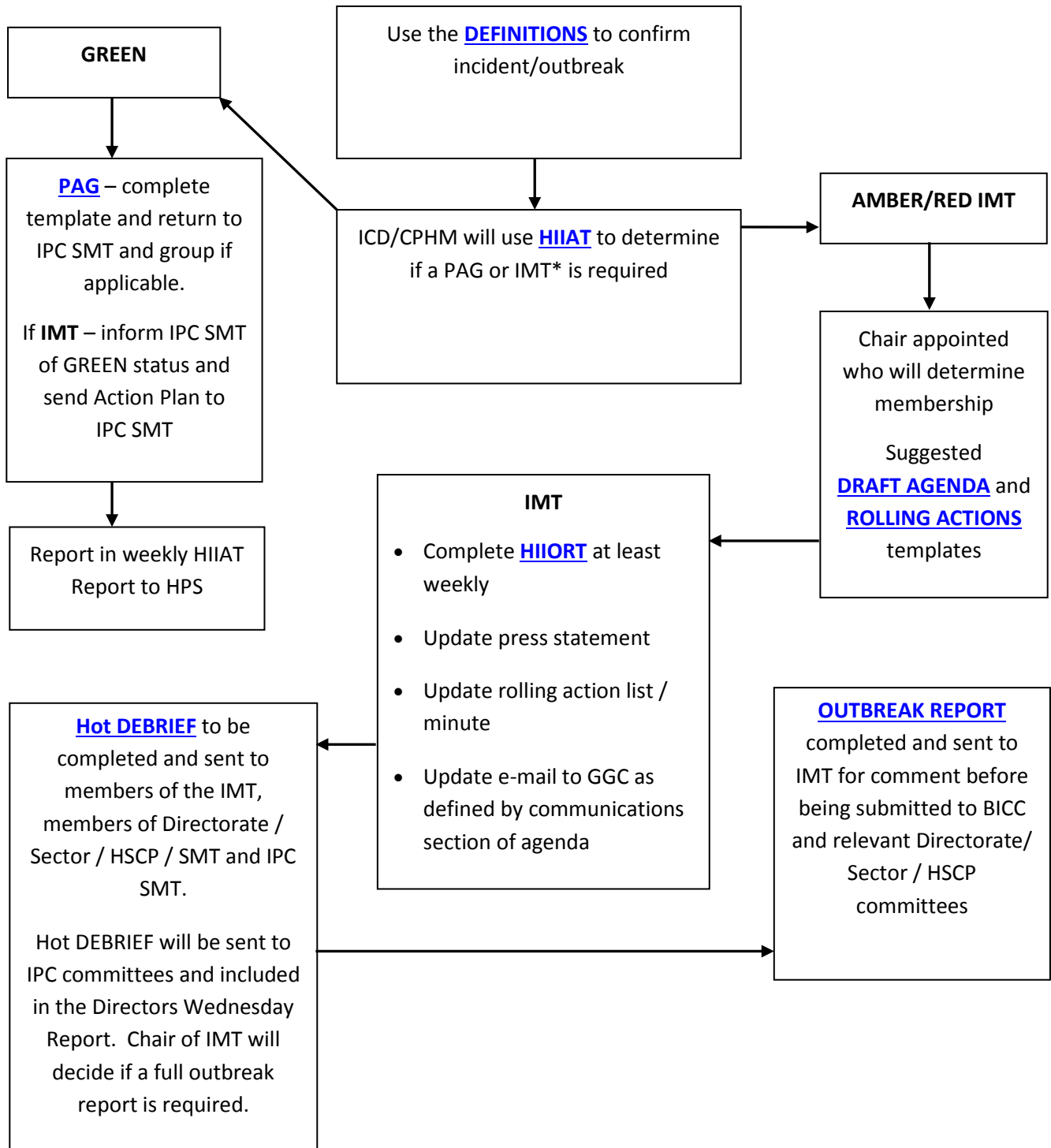


Process for the Management of Infection Incidents or Outbreaks



- *IMT will be convened for both infection incidents and outbreaks of infection.*
- *If staff screening is required please refer to HDL(2006)31 and the GGC Staff Screening SOP which can be found at <http://www.nhsqgc.org.uk/your-health/infection-prevention-and-control/prevention-and-control-of-infection-manual-policies-sops-guidelines/core-prevention-policies-sops-includes-sicps/>.*
- *“HAI deaths which post an acute and serious public health risk”, must be reported to the Procurator Fiscal. Please refer to SGHD/CMO (2014)27.*