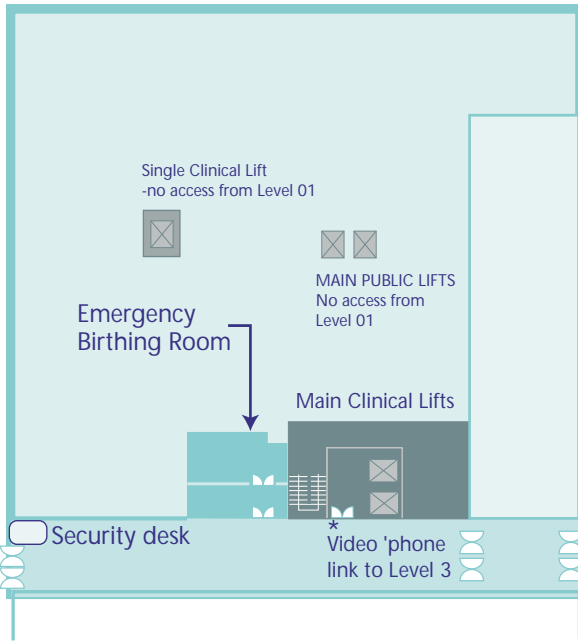


LEVEL 00
QEB Concourse



PRINCESS ROYAL MATERNITY

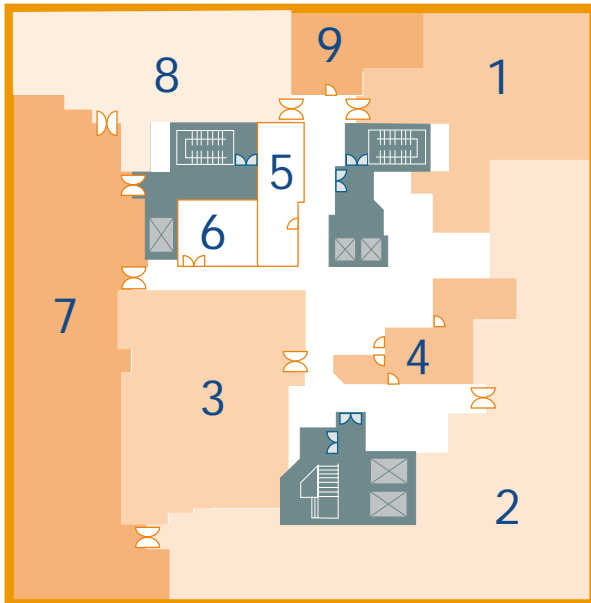
How to get about the PRM



LEVEL 01

-  Lifts
-  Stairwell
-  Door

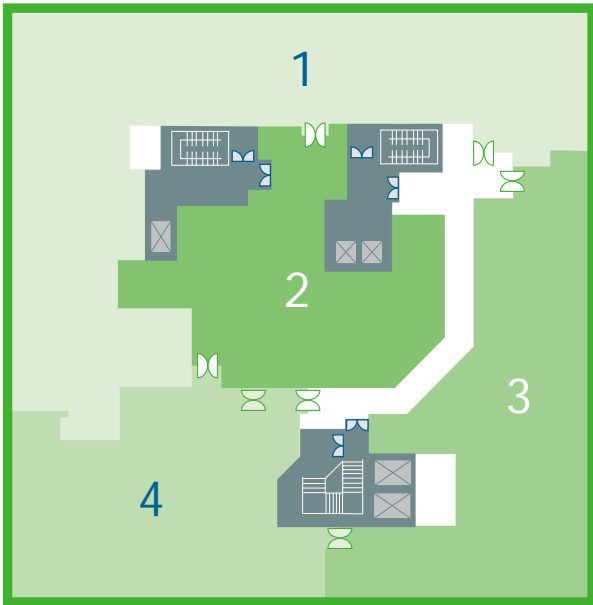
**MATERNITY
AMBULANCE
ENTRANCE
& DROP OFF
for LABOURING
WOMEN**



LEVEL 2

- 1 Dietitian
Health Education
Physiotherapy
- 2 Outpatients Department
- 3 Ultrasound Department
- 4 Medical Records
- 5 Community Midwives
- 6 Seminar Room
- 7 Day Care Unit
- 8 Early Pregnancy Unit
- 9 Social Work

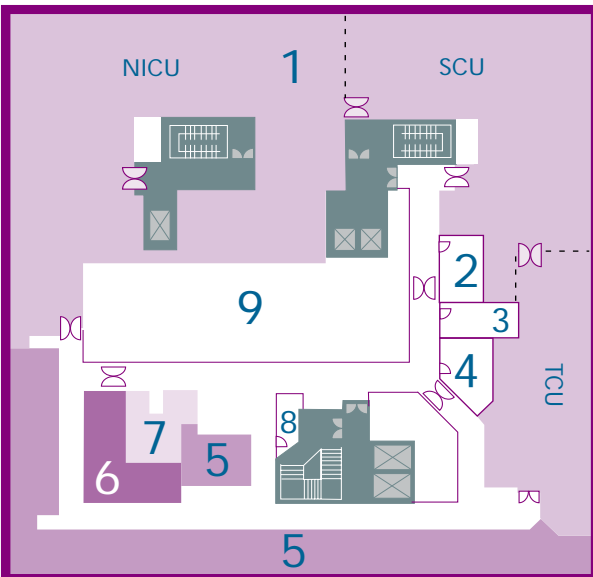
-  Lifts
-  Stairwell
-  Door



LEVEL 3

- 1 Labour Suite
- 2 Theatre Suite
- 3 Ward 68
- 4 Prenatal Assessment

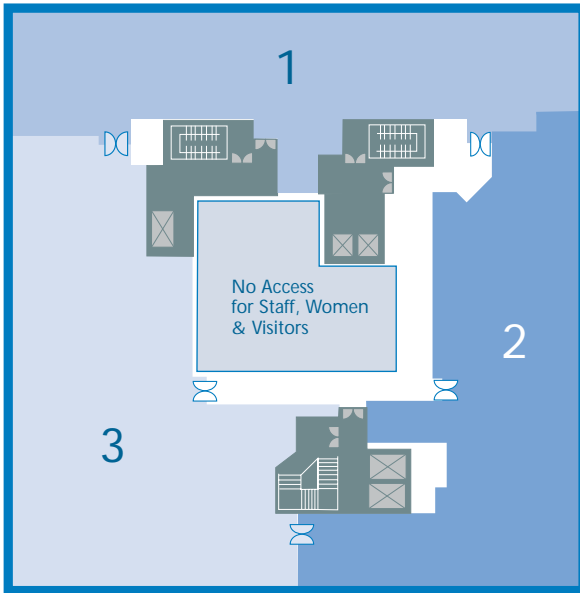
-  Lifts
-  Staircase
-  Door



LEVEL 4

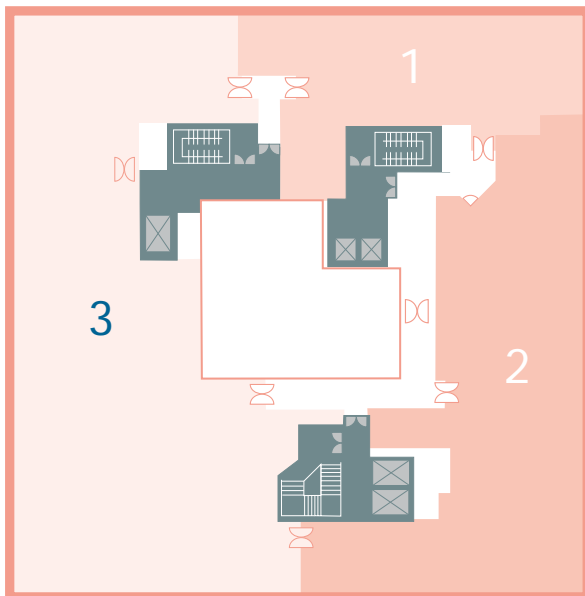
- 1 Neonatal Unit
- 2 Seminar Room
- 3 Pharmacy
- 4 Clinical Physics
- 5 Offices
- 6 Staff On-call
- 7 Snowdrop Chapel
- 8 Staff Breast Feeding Room
- 9 Plant Room

-  Lifts
-  Staircase
-  Door



LEVEL 5

- 1 Midwives Birthing Unit
- 2 Ward 69
- 3 Ward 70



LEVEL 6

- 1 Ward 71
- 2 Ward 72
- 3 Ward 73