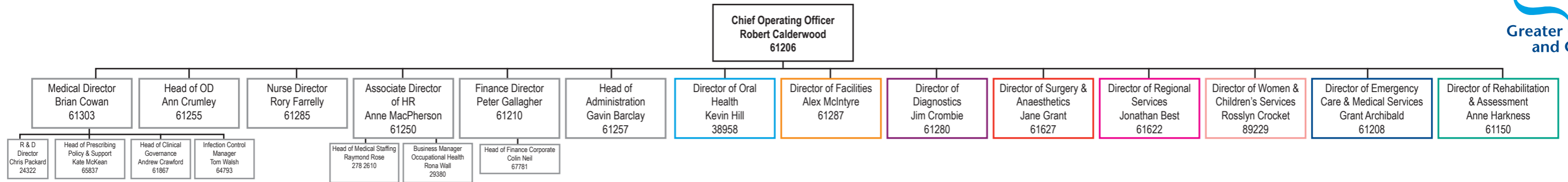


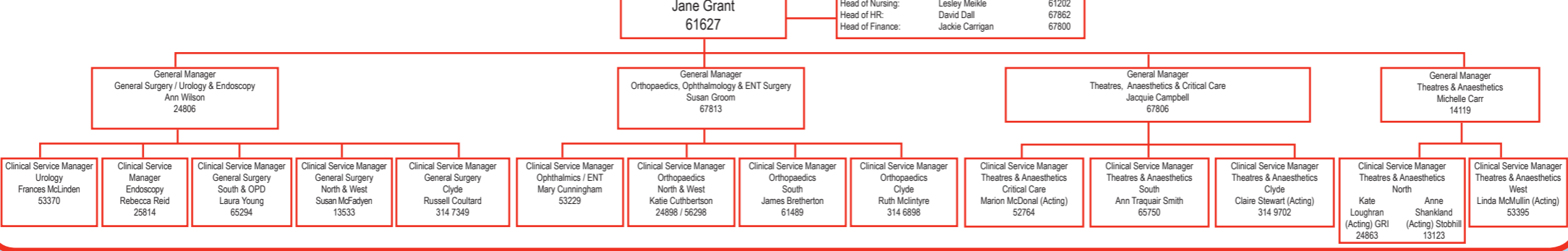
Acute Services Division Management Structure - July 2008



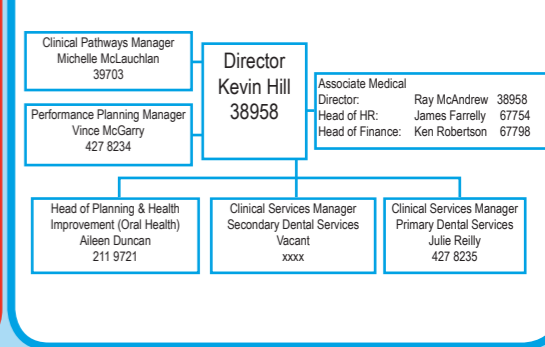
Acute Services Clinical Directors

Diagnostics Directorate	
Clinical Director Radiology Iain Robertson 51466	Clinical Director Radiology - Clyde Alan Wallace 314 6799
Clinical Director Laboratory Medicine Penelope Redding 65601	Clinical Director Laboratories Clyde vacant xxxx
Rehabilitation & Assessment Directorate	
Clinical Director Stroke & Disability Services Christine McAlpine 13247	Clinical Director Elderly Medicine - South Iain Lennox 65129
Clinical Director Elderly Medicine / Palliative Care - North Jennifer Burns 24907	Clinical Director Care Homes Jean Hannah 427 8355
Clinical Director Rehabilitation & Assessment - Clyde Graeme Simpson 314 6190	
Emergency Care & Medical Services Directorate	
Clinical Director Dermatology Robert Herd 56259	Clinical Director Medicine - South Robin Northcote 65396
Clinical Director Medicine - West John Connell 52610	Clinical Director Medicine - North Ken Paterson 24917
Clinical Director A&E - Glasgow Allister Ireland 21205	Clinical Director A&E - Clyde Frank Westerduin 314 6601
Clinical Director Medicine Clyde Graham Curry 01475 504 445	
Surgery & Anaesthetics Directorate	
Clinical Director Surgery George Welch 61160	Clinical Director Theatres / Anaesthesia / Critical Care Glasgow & Clyde John Dickson (Acting) 314 6609
Clinical Director Surgery & Urology - Clyde vacant xxxx	Clinical Director Orthopaedics - Clyde Paul Alcock 314 7361
Clinical Director Orthopaedics Lech Rymaszewski 25334	Clinical Director ENT/Ophthalmology David Simpson 13158
Regional Services Directorate	
Clinical Director Plastics Andrew Malyon 29248	Clinical Director Neurosciences John Greene 62591
Clinical Director Cancer Services Alan Rodger 57076	Clinical Director Renal / Homeopathy Services Stuart Rodger 52234
Women & Children's Services Directorate	
Clinical Director Neonatology Services Jonathan Coutts 80750	Clinical Director Obs/Gyn Alan Mathers 24755
Clinical Director Medical Paediatrics Jim Beattie 80126	Clinical Director Obs / Gyn - Clyde Andrew Quinn 314 6681
Clinical Director Child Protection Jean Heribson 89355	Clinical Director Paediatrics - Clyde Mary Rae 314 6738
Oral Health Directorate	
Clinical Director David Wray 211 9709	

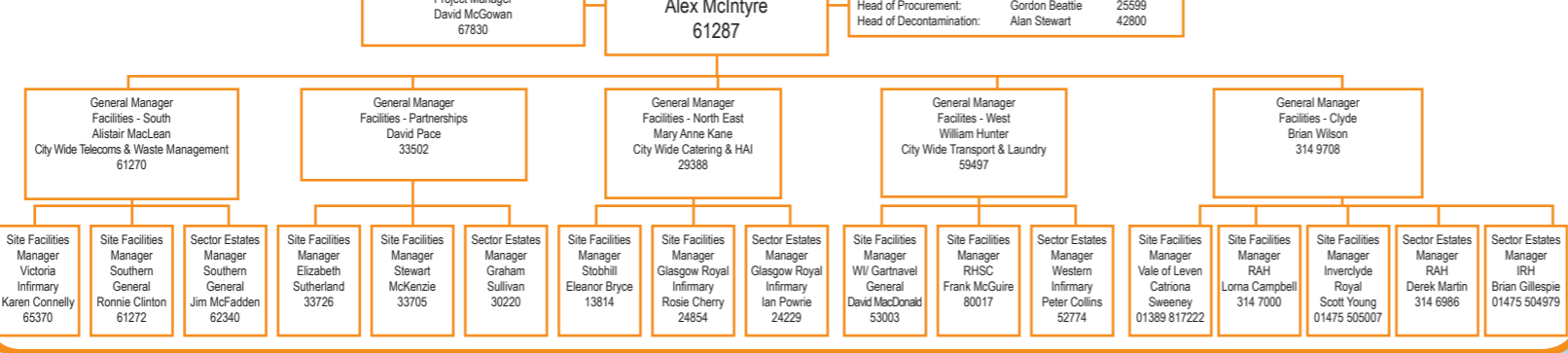
Surgery & Anaesthetics Directorate



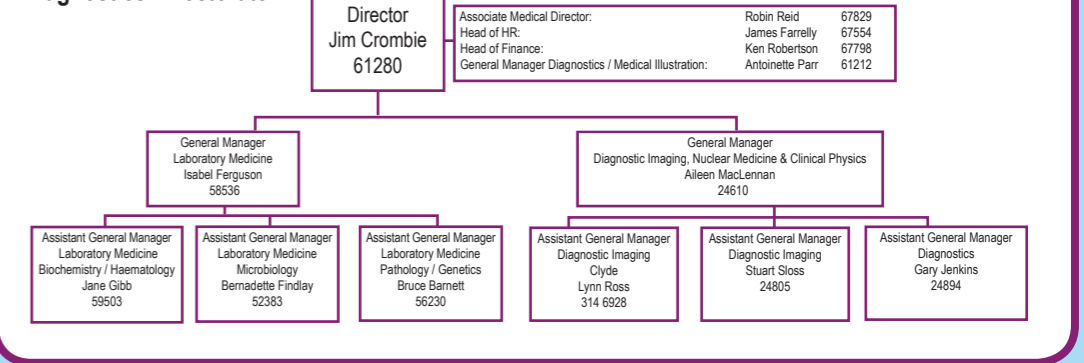
Oral Health Directorate



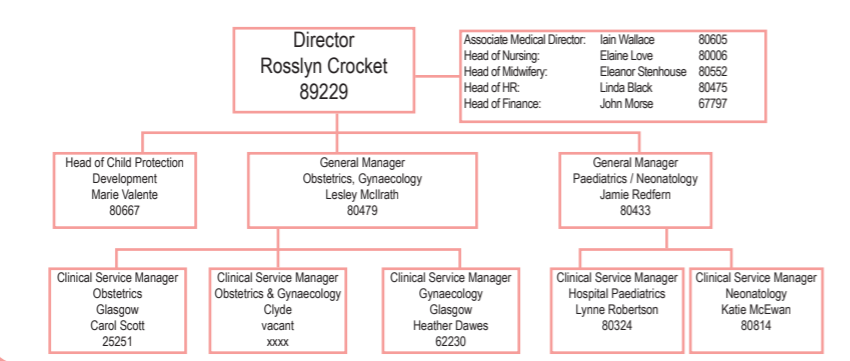
Facilities Directorate



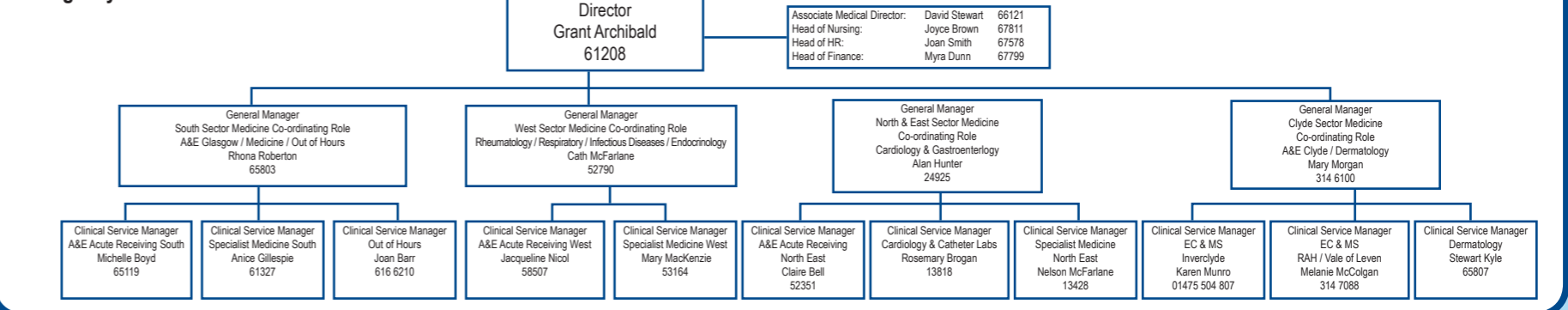
Diagnostics Directorate



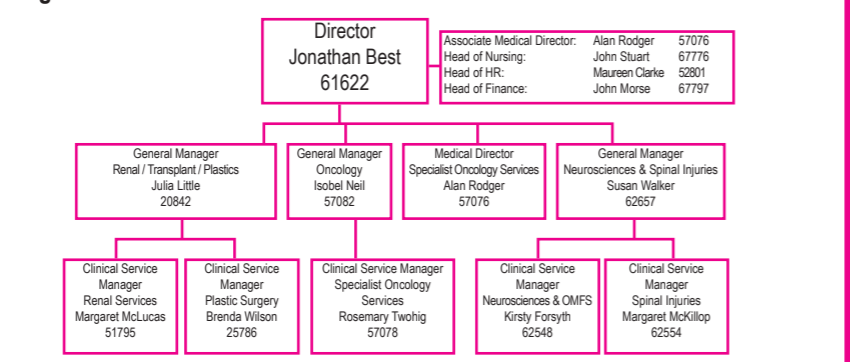
Women & Children's Directorate



Emergency Care & Medical Services Directorate



Regional Services Directorate



Rehabilitation & Assessment Directorate

